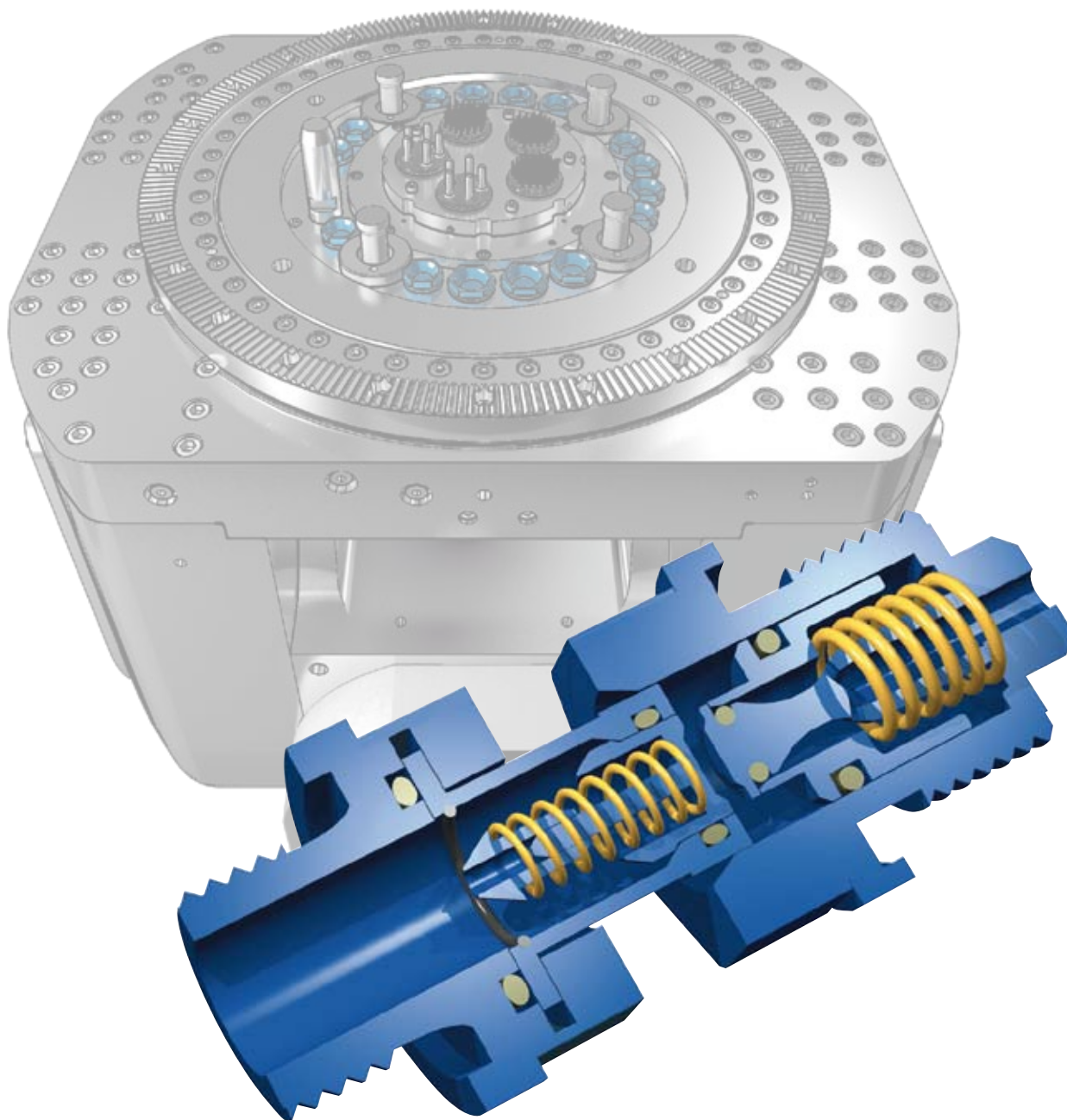


# CyFit

Quick coupling system



## CYTEC

SYSTEMS

CyTec Zylindertechnik GmbH  
Steffensrott 1 • D-52428 Jülich • Tel.: (+49) 2461/6808-0 • Fax: (+49) 2461/6808-25  
E-mail: [info@cytec.de](mailto:info@cytec.de) • <http://www.cytec.de>  
Edition 02/2011

## Safe, quick, precise...

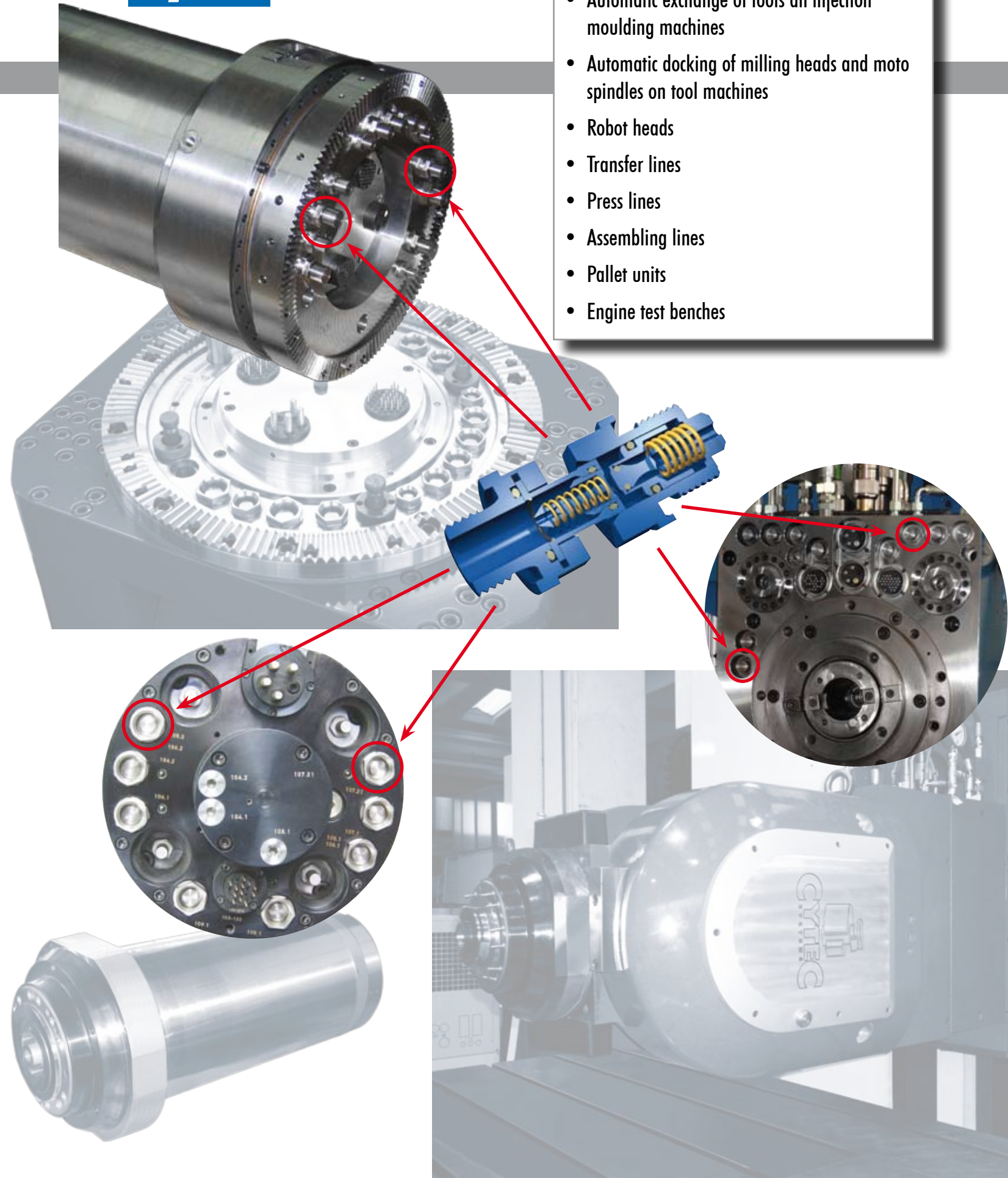
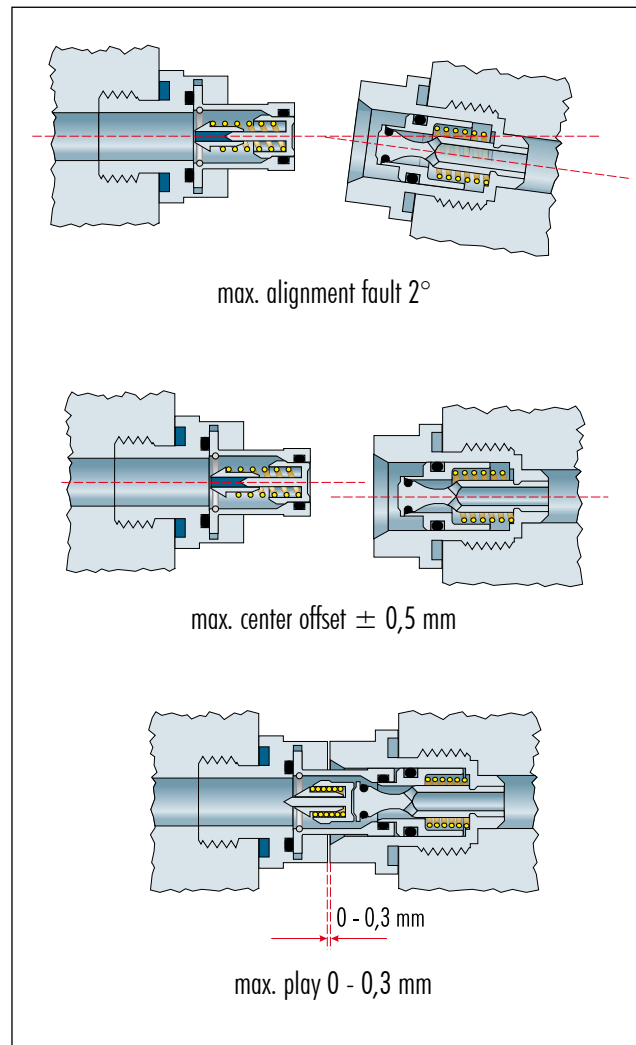
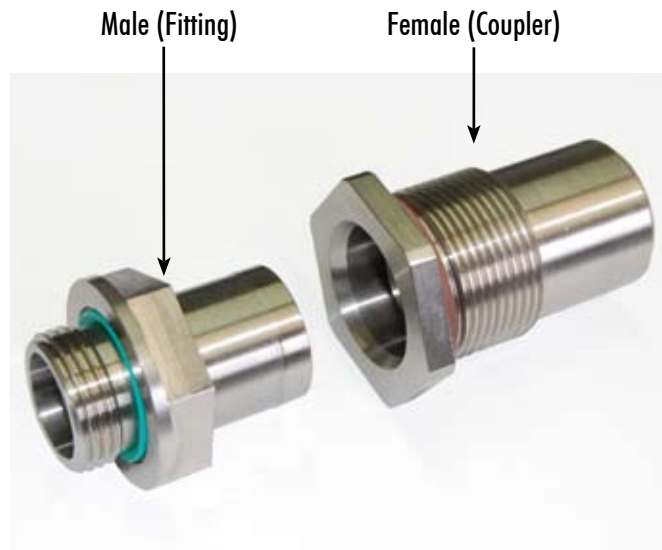
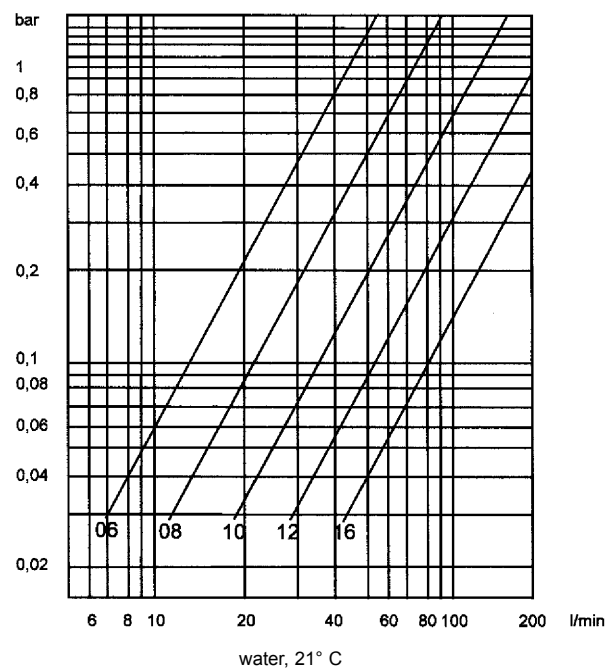
... that are the demands on modern coupling systems for energy or fluid circuits. For this purpose CyTec has developed the CyFit quick-action coupling system which has proven for years its extraordinary possibilities as a reliable coupling device with the lowest possible losses through leaks. This has a very compact construction and at the same time it guarantees extremely low flow-resistance with high through-flow speeds.

Thanks to the integrated offset and angle compensation system it is possible to compensate for production tolerances and inaccuracies during joining. This usually means no need for additional tool holder screw threads, precentering devices and guides.

In addition, a special packing arrangement enables practically leak-proof coupling and separating. Trapped air and impurities are avoided.

CyFit guarantees trouble-free highly efficient working on modern machining centres with the shortest possible set-up times.

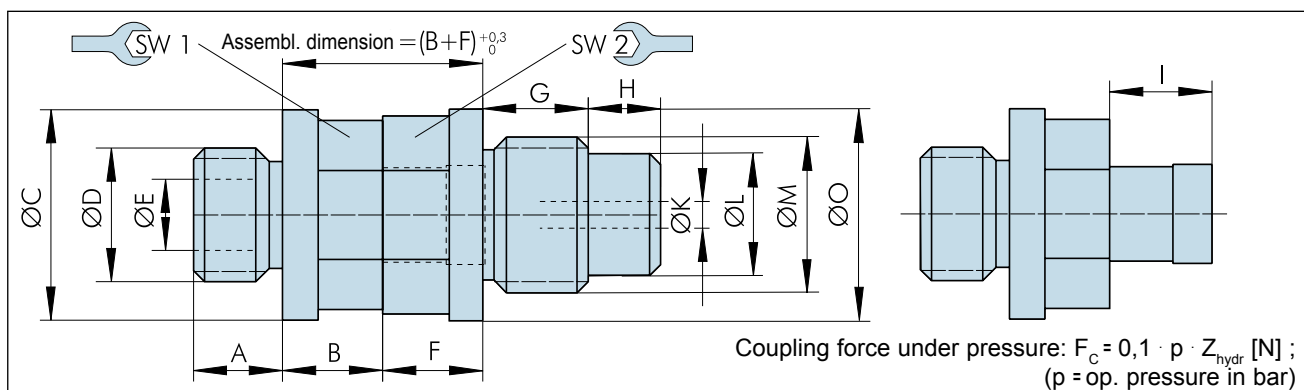
## Loss of pressure of CyFit coupler Δ pV-diagram



- ### Exemplary Applications
- Automatic exchange of tools an injection moulding machines
  - Automatic docking of milling heads and moto spindles on tool machines
  - Robot heads
  - Transfer lines
  - Press lines
  - Assembling lines
  - Pallet units
  - Engine test benches



## Quick-action couplers



Dimensions Male (Fitting)							
Designation	A [mm]	B [mm]	Ø C [mm]	Ø D	Ø E [mm]	I [mm]	SW1 [mm]
QC/M06-N	8	9	17,5	M 12x1,5	6,4	8,8	16
QC/M08-N	10	9	20,5	M 14x1,5	8,8	10,1	18
QC/M10-N	10	9	24	M 18x1,5	10,8	13,7	22
QC/M12-N	10	9	27	M 20x1,5	12,7	15,7	24
QC/M14-N	12	10	32	M 22x1,5	15,9	17,9	28
QC/M16-N	12	12	41	M 27x2,0	22,7	22,7	36
QC/M06-H	8	9	19	M 12x1,5	6,4	9,2	17
QC/M08-H	10	9	24	M 14x1,5	9	11,2	22

Operation data				
Male/ Female	Tightening torque [Nm]	max. pressure [bar]	max. flow rate [l/min]	Z <sub>hydr</sub> [mm <sup>2</sup> ]
QC/M/F06-N	25 - 30	80	4	126
QC/M/F08-N			12	133
QC/M/F10-N			20	196
QC/M/F12-N	30 - 40		30	243
QC/M/F14-N			45	366
QC/M/F16-N			68	585
QC/M/F06-H	25 - 30	200	4	126
QC/M/F08-H			12	133

Dimensions Female (Coupler)								
Designation	F [mm]	G [mm]	H [mm]	Ø K [mm]	Ø L [mm]	Ø M	Ø O [mm]	SW2 [mm]
QC/F06-N	9	10,5	3,5	2,4	7	M 14x1,5	19	16
QC/F08-N	9	11	9	4	14,5	M 18x1,5	24	18
QC/F10-N	9	16	10	5,4	17,5	M 20x1,5	25	22
QC/F12-N	9	18	11	8,2	19,5	M 22x1,5	27	24
QC/F14-N	8	20	17	11	24	M 27x2,0	32	28
QC/F16-N	6	25	29	14	32	M 36x2,0	48	43
QC/F06-H	9	12,5	3,5	2,4	7	M 14x1,5	19	16
QC/F08-H	9	12	10	4	14,5	M 18x1,5	24	20

